



A promotional graphic for the Suzuki GSX-S1000A/FA. At the top, the model name 'GSX-S1000A/FA' is written in a stylized font, with 'GSX-S' in grey and '1000A/FA' in white. Below this, the text 'WELCOME TO THE PURE SPORT ROADSTER' is written in large, bold, white, italicized letters. On the right side, there is a smaller image of the rider on the blue motorcycle from the top image, riding on a road with a clear blue sky and some trees in the background.

ROADSTER

LEGENDARY PERFORMANCE TUNED FOR THE STREET

❖ **TRACK READY GSX-R1000 ENGINE
RE-TUNED FOR REAL WORLD RIDING
STREET TUNED, LONG-STROKE GSX-R1000 POWERPLANT**



GSX-R DUAL THROTTLE VALVE



NEW PISTONS - 3% LIGHTER

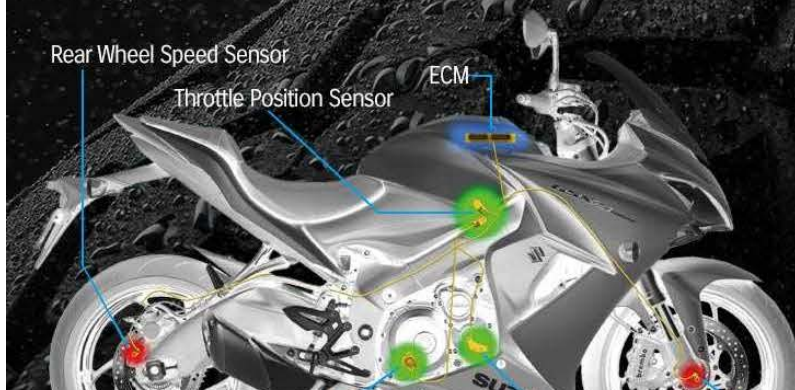


(SCEM)-PLATED CYLINDERS

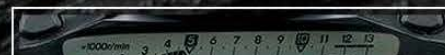


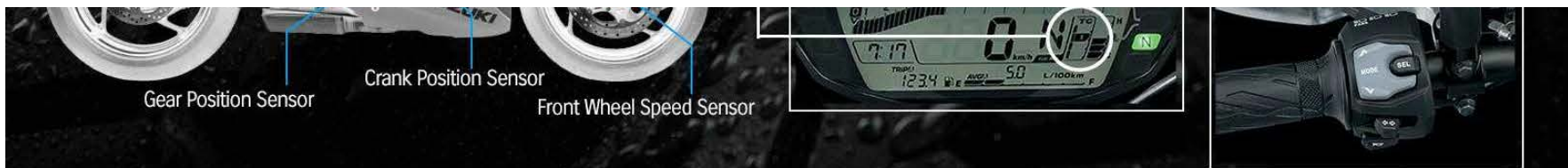
SUZUKI EXHAUST TUNING VALVE

❖ **NEWLY DESIGNED EXHAUST SYSTEM
CLEAN LOOKS, EXCITING EXHAUST NOTES & ADRENALINE-RUSHING PERFORMANCE**



❖ **THREE-MODE TRACTION CONTROL+OFF
MAKING SPORT RIDING MORE ENJOYABLE
ALL FIVE SENSORS ARE CHECKED 250 TIMES PER SECOND**
MODE 1 : SPORT RIDING - GOOD ROADS - LOW SENSITIVITY
MODE 2 : CITY RIDING - REGULAR ROADS - MIDDLE SENSITIVITY
MODE 3 : WET/COLD RIDING - HIGH SENSITIVITY





Gear Position Sensor

Crank Position Sensor

Front Wheel Speed Sensor

SUPERBIKE TECHNOLOGY DESIGNED FOR EVERY ROAD



❖ BREMBO FRONT CALIPERS
GSX-R1000 4-PISTON MONO-BLOCK CALIPERS

❖ ALL-WHEEL BOSCH ABS
LIGHTWEIGHT ABS MONITORS WHEELS SPEED 50 TIMES PRE ROTATION



*GSX-S1000 INSTRUMENT CLUSTER AND RENTHAL FATBAR SHOWN

❖ RENTHAL FATBAR - TAPERED & ADJUSTABLE
INCREASE RIGIDITY, REDUCE WEIGHT AND VIBRATION



❖ NEWLY DESIGNED CHASSIS
ENGINEERED SPECIFICALLY FOR REAL WORLD PERFORMANCE
810mm SEAT HEIGHT - LOWEST IN CLASS
ADJUSTABLE KYB INVERTED FORK



❖ GSX-R SWINGARM



**ALUMINUM-ALLOY SWINGARM STRAIGHT FROM GSX-R1000
RUGGEDLY BRACED FOR SUPERIOR HANDLING**

GSX-S1000FA

GSX-S1000A



EUROPEAN MODEL SHOWN

**CHOOSE
YOUR
BEAST**



EUROPEAN MODEL SHOWN